

Plate 4: Freehand sketching

(1) Train your hand by completing the following tasks.

Draw horizontal lines connecting points A and B.

Solid line: A .
 Solid line: A .
 Solid line: A .
 Solid line: A .

. B
 . B
 . B
 . B
 . B
 . B

Dashed line: A .
 Dashed line: A .

Draw vertical lines connecting points C and D.

Draw inscribing circles with centerlines.

Solid lines:
 C C
 . .

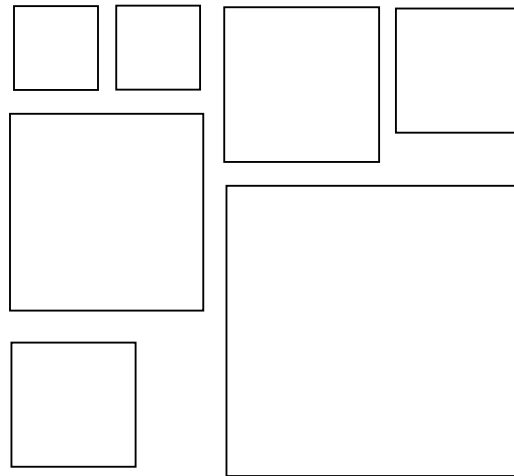
Dashed lines
 C C
 . .

.
 D

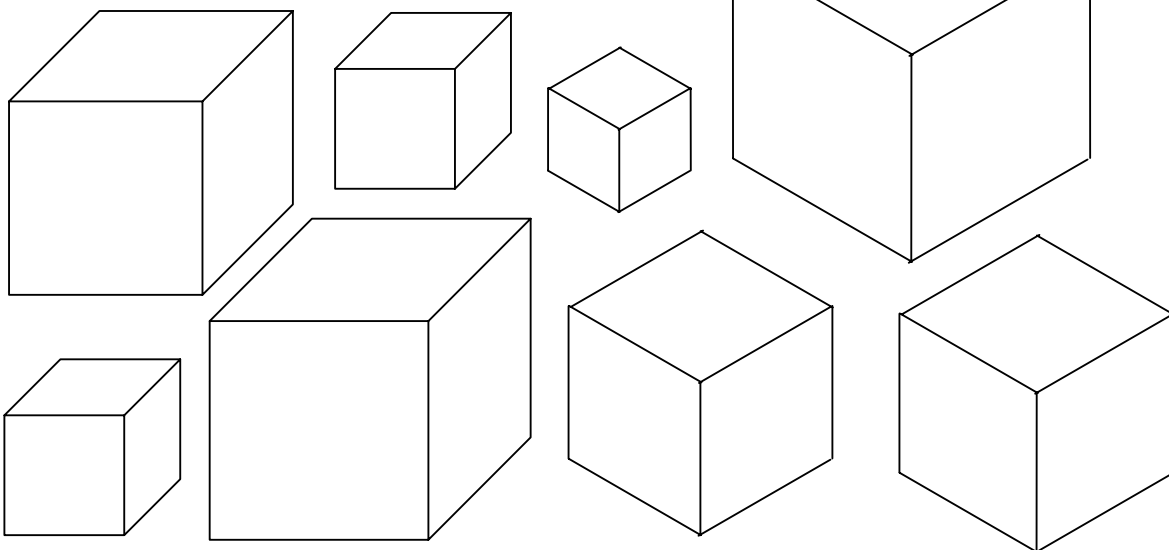
.
 D

.
 D

.
 D



Draw inscribing circles/ellipses with centerlines on all faces



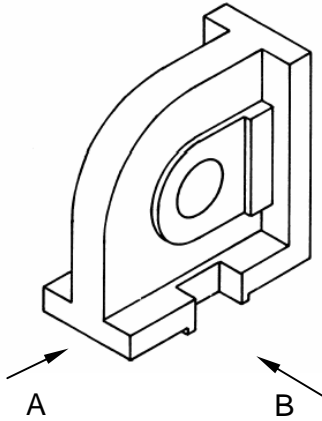
Faculty of Engineering, Thammasat University		ME111 (TEP/TEPE)	
Plate 4: Freehand sketching		Date	GROUP
Name		ID	PIN

(2) Make **isometric sketches** of the following objects in the space provided.

<p>1 KEY PLATE</p> <p>2 BASE</p> <p>3 STRAP</p> <p>4 BRACKET</p> <p>5 CUTTER BLOCK</p> <p>6 BRACKET</p> <p>7 HOUSE MODEL</p> <p>8 GUIDE BLOCK</p> <p>9 FINGER</p>	1	
	2	
	3	
4	5	6
7	8	9

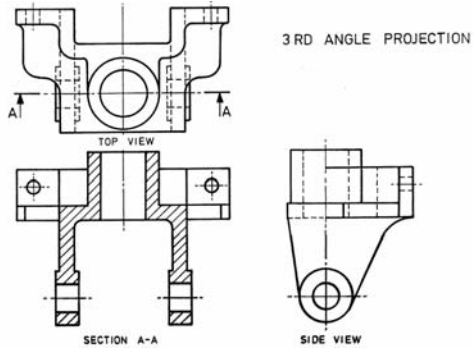
Faculty of Engineering, Thammasat University		ME111 (TEP/TEPE)	
Plate 4: Freehand sketching		Date	GROUP
Name		ID	PIN

(3) Freehand views A and B of the object below.



Faculty of Engineering, Thammasat University		ME111 (TEP/TEPE)	
Plate 4: Freehand sketching		Date	GROUP
Name	ID	PIN	

(4) Freehand sketch the isometric view of the objects below.



Faculty of Engineering, Thammasat University		ME111 (TEP/TEPE)	
Plate 4: Freehand sketching		Date	GROUP
Name	ID	PIN	